

WATERBEACH COMMUNITY ASSOCIATION

Beach News

WATERBEACH - LANDBEACH - CHITTERING

Winter 2020
No.264



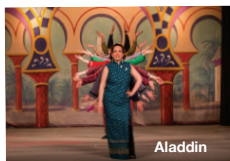
Portrait of Murder



Steel Magnolias



Aladdin



Robinson Crusoe



Set for Steel Magnolias



The Memory of Water



Woman in Mind



Hello, Is There Any Body There?



Snails for Starters



The Diary of Anne Frank



Hi De Hi



Lady Glanville's Fritillary



Look Who's Talking



Jack & the Beanstalk



Entertaining Angels



THIS IS WHAT WE ARE MISSING!

Contents

| | | | |
|-----------------------------|----|--|----|
| Community Association | 1 | Gardening Club | 15 |
| Waterbeach WI | 2 | The Landbeach Society | 15 |
| Community Playgroup | 3 | Waterbeach Cycling Campaign | 16 |
| Beach Social Club | 4 | Farmland Museum | 17 |
| St. John's Church | 5 | Toddler Playgroup | 18 |
| Waterbeach Brass | 6 | Arthur Rank Hospice | 19 |
| WASPS | 7 | Girlguiding | 20 |
| Waterbeach Surgery | 8 | Update from Lucy Frazer MP | 21 |
| Library News | 9 | Military Heritage Museum | 23 |
| Waterbeach United Charities | 9 | WHAT (Waterbeach Homes for Amicable Transport) | 24 |
| Waterbeach Station | 10 | Happy Folks Club | 25 |
| What's in a name? | 11 | Tithe Barn Trust | 26 |
| Salvation Army | 13 | Cambridge Without Incineration | 27 |
| Waterbeach Theatre Company | 14 | Waterbeach United Charities | 28 |

Community Association



Christmas - Even though it has been a very challenging year we have tried hard to continue with a long standing tradition in Waterbeach of organising a Christmas tree and lights around the Green. A massive thank you to Gary Langley and Dean Minter for doing their magic with the lights

around the Green and having everything looking festive. Thanks also to the Clack family for organising the Christmas tree on the Green. The tree was kindly donated by Urban&Civic and transported by Bannolds. Lee & Pam Clack, along with Bill Moon then braved some horrible



weather and made sure it was decorated with lights for everyone to enjoy.

Many events and activities have had to be cancelled this year, including our own Waterbeach Feast in June. And as the situation with Covid-19 has been too uncertain to allow us to plan ahead too far, earlier in the year we also decided that it would not be possible to hold the annual 'Carols on the Green' on Christmas Eve. These decisions are not taken lightly as both events are

very much part of our village life, but of course safety comes first and we would not wish to put anyone at risk. We hope that next year these events will return and be even bigger and better!

Beach News - Thank you to everyone who has made our village publication so varied and interesting throughout the year. We really appreciate all your contributions. A special thank you also to our team of Beach News deliverers who volunteer to deliver the magazine throughout the area.

Normally the winter edition of Beach News would have reports from our member groups on their recent activities and details of up and coming events, but due to the coronavirus restrictions, this year is very different. However, we have been sent updates on how groups have adapted to these difficult times and also some interesting articles detailing some history about Waterbeach.

Although it looks like we may have to cope with these strange times for a little longer, we hope that we may be able to look forward to returning to all the varied activities and social events our villages have to offer in 2021.

Please note that as rules are constantly being reviewed and amended some details contained within Beach News articles may be out of date by the time it is published.

On behalf of all the committee of Waterbeach Community Association we wish you all a very Merry Christmas and a Happy New Year.



Waterbeach WI



News is a little thin from our WI, but we are trying to keep in touch with our members and give support where we can. During the summer months we met in small groups on the Rec for a picnic and chat in a socially distanced way. Individuals have been meeting up for walks and the Book Group met in gardens and now on line.

We had our first Zoom Meeting in November where we played Bingo, which was surprisingly enjoyable and a good distraction from the restrictions of Covid. CFWI has been arranging some online presentations as has the national federation via Denman College. Crafts, cooking and historical talks have all been available.

In December we shall meet again on line with the intention of having a Quiz and some sort of Christmas craft. The Christmas Raffle will also be drawn. We wish all of our members and the wider community a Happy Christmas and hopeful New Year.

Community Playgroup



A day at my new playgroup by Ian aged 4

Ian has started at Waterbeach Community Playgroup this term, and he has asked his mum to help him tell us what he is enjoying now that he has settled in!

It's almost 9am and I can't wait to go into playgroup. I'm so excited to play again with my friends and staff. The door opens and the first thing I do is to clean my hands with the hand sanitizer, then hang my coat and go and find my name and photo for the board.

I look around, there are so many toys to play with. My favourites are the building blocks and painting. What should I start to play with? It's a sunny day and all my friends are playing in the garden, I'm going there with them and I decide to play with the mud kitchen. I love pretending to cook leaves and sticks!

It's already snack time, what I will have today? There are lots of choices. Do I want cucumber? Breadsticks? In the end I choose to have crackers and banana!

After that I go out again to play with the mud, it's so funny to get messy! While excavating we found a lot of bugs and wiggly worms. I have so many questions and I'm learning new things.

Unfortunately it's time to go back inside, some of my friends are going home before lunch but I'm going to have lunch here at playgroup. I finish my lunchbox and I still have time for playing. I'm so excited, now it's time to make playdough and I'm helping with measuring and mixing the ingredients. So funny and sticky!

It's 3pm and now it's time to go home, I'm tired but very happy and I can't wait to come back again tomorrow.

We are open from 9am to 3pm daily during term time. We take children from their 2nd birthday. 15 hours government funding is available to all 3 and 4 year olds and to qualifying 2 year olds and 30 hours funding is available to qualifying 3 and 4 year olds. We are situated in the primary school grounds in the centre of Waterbeach. Please look at our website and diary at www.waterbeachplaygroup.org.uk to find out more.

We are now full for the current academic year, but we are starting to take enquiries and bookings for places in September 2021. Please email info@waterbeachplaygroup.org.uk for a prospectus or to find out more.



Beach Social Club

Well here we go again after a three month open spell we are locked down again.

It was a pleasant but different 3 months, with remembering to socially distance and observe the one way system. Our members have been good obeying the rules and if they forget they are quick to respond to our reminders. Most of all they all succeed in leaving the club by 10pm (with a few grumbles), but they are happy to have table service which our staff have delivered with a smile.

We miss our entertainment nights, but they will be back as soon as Covid19 is clear. How long? Who knows?

We have replaced our old TV projector and now show crystal clear football on a big screen in the lounge, much to the delight of the footy fans, with BT and Sky Sports.

We have most of the regulars back some new members have joined them and we have had a good many applications for membership.

The charities we selected last year are British Heart Foundation and Alzheimer's. As we considered the amount of money raised so far to be too small, we have extended the collection year to October 2021 and membership year to March 31st.

Our AGM saw a change of Treasurer with Keith standing down and Sarah Shevlin taking over. Thank you to Keith for his help with the Covid rules and his time in post.

Also four new committee members were elected: Joe Shevlin, Billy Mills, Liam Taylor and Steven Townsend. Thank you to all of them for volunteering and thank you to Ken Simpson who has stood down, for all your help over the years.

Unfortunately because of Covid restrictions we will not be open on Christmas day for the usual family get together. But we do wish everyone a happy Christmas and New Year

Finally thank you to our members for their support over the years
Keep up to date with our Facebook page and notices in the club.

The club is fully air-conditioned and has free WiFi. The function room is not available for members to hire at present because of Covid 19 restrictions.

Observe social distancing and stay safe.

Geoff Donovan - Chairman

St John's Church

Wow, these are tough and challenging times for all of us: Covid and the threat of Covid, the loss of people we love, the disconnection from family and friends the loss of freedoms, unemployment, isolation and the effects on our mental health. It's also been an opportunity to take stock, reflect, prioritise, slow down and focus on the important things in life.

If you're anything like me, rushing around, being busy, and often failing to spend time giving thanks for our wonderful world and the gift of family, friendships and community. I'm trying to do better!

The Food Hub at St John's, in partnership with the C3 Church, has been operating since early June and we have fed around 4,300 people as at 3rd November, most of whom are Waterbeach residents. We are now running one Thursday session per week from 3-6pm, and we offer fresh fruit and vegetables, dairy, frozen meals and non-perishables. No proof of need and no voucher is required. Our intention is to continue the successful partnership with C3 into 2021, subject to the availability of funding. If you are in a position to offer financial support to the project, please contact me on my email below. Donations of non-perishable canned, dried and packet foodstuffs and toiletries are always welcome, and can be received during the opening times of the Thursday session.

As I write, we are in the midst of Lockdown 2 and St John's is once again closed for Sunday services, although the church is currently open every day 10am-4pm for private prayer. We have provisionally planned open air Christingle services in the churchyard and recommence our popular Forest Church services when permitted. I'll update you on social media when we're able to go ahead.

I want to take this opportunity to assure you of my prayers and to wish you and your families a peaceful and fear-free Christmas. If I can help to support you and provide a listening space, please do not hesitate to contact me; whether you identify as a Christian, or another faith, or of no faith the St John's community is here for you as a place of encouragement and healing.

Paul Butler - Vicar

revpbutler@gmail.com

Follow us on Facebook: facebook.com/stjohnschurchwaterbeach

Website: www.stjohns-waterbeach.org.uk



Waterbeach Brass



Remembrance Service

At the start of October the band were pleased to begin rehearsing in person again, albeit in smaller socially-distanced groups and following a number of other risk mitigation measures. During this time we were looking forward to playing at the Cambridge Service of Remembrance at the War Memorial on Hills Road alongside members of Pembroke College Choir and the Royal British Legion. The event is a regular fixture in the band's calendar and a treasured opportunity to pay our respects, especially so this year with the 75th anniversary of the end of WW2. It was with sadness, then, that the band learned that we would not be able to perform in person at this year's ceremony due to the latest Coronavirus lockdown measures. However, not deterred, the band quickly organised a recording session to provide a virtual service of music instead. This was live streamed by Cambridge 105 Radio on Remembrance Sunday alongside archived recordings from previous years when we had played 'live' to attendees at the War Memorial.

Operation Christmas

Sadly our annual concert with the children of Waterbeach School has been cancelled as have our rehearsals due to the latest restrictions. However, undeterred, the band is planning a virtual Christmas extravaganza to provide a ray of light in these dark times. Tune into the band's YouTube channel during December where the band will be releasing daily Christmas videos ranging from traditional carols to pop songs – something for everyone! If you're interested, see a link to our YouTube playlist here: https://www.youtube.com/playlist?list=PLGzsuN8axfb4hU7sqrA_S3TDLuRxM53aT, or follow our Facebook page for updates: <https://www.facebook.com/WaterbeachBrass>

Our conductor, professional musician Andy Kershaw, has also been getting in the Christmas spirit with his Victorian brass group, Queen Victoria's Consort, who have published a Victorian Christmas Card featuring traditional music played on period instruments. See their website for more details: <https://www.queenvictoriasconsort.co.uk/victorian-christmas-card.html>

From all at Waterbeach Brass we wish you a very merry Christmas and New Year and hope you enjoy our daily dose of festive cheer despite these challenging times!

WASPS

Providing home-from-home childcare in the Waterbeach community for 23 years!

We currently have spaces available – please get in touch to find out more.



The children have all been enjoying the Autumn Term at the club, under the supervision of the staff team. New resources including a chess set, Minecraft Uno, Plus Plus bricks, Monopoly and other games have been enjoyed alongside old favourites such as Hama Beads, colouring and making good use of our outdoor area too. The children have enjoyed tucking into our new snacks after a full day at school, the wraps are particularly popular, the children report they are 'Yummy!' We have recently introduced STEM activities on Thursday afternoons between 4:30-5:00 p.m. These are run by an approved STEM Ambassador and are designed to promote science, engineering, and technology. The sessions involve hands on experiments that facilitate learning and relevance to our daily lives. A highlight of the



term so far, was the Halloween party held at the After School Club ahead of half term. We managed to organise some fun for the children within their groups, in line with the guidance that we need to follow. The children enjoyed lots of fun games and activities, making decorations, Halloween snacks and some even dressed up too! It was great to see the children so excited in the build up to the party and on the day. This year was very different to usual and the children were not able to go 'trick or treating' or hold their

own parties as many usually would, so we were happy we could provide some fun! We received some lovely feedback from the children and parents/carers. Take a look at some of our photos!



Following our Annual General Meeting (AGM) held online this year on 15th October, we are pleased to report we have a full committee in place for this year, we thank the committee for their ongoing work behind the scenes.

We will be running a Holiday Club day on Monday 4th January 2021, bookings are now being taken for the full day (8 a.m. – 6 p.m.) morning (8 a.m.-1 p.m.), afternoon (1-6 p.m.) Hourly bookings are also available. Keep a look out for the activities available... coming soon!

WASPS has a Facebook page, 'Waterbeach After School Play Scheme – WASPS' our WASPS Logo is the profile picture, please like our page to find out the latest news and updates.

Breakfast Club runs from 7:45 a.m. – 8:50 a.m. and After School Club runs until 6 p.m. on all school days. Please enquire to find out availability and book a place. We currently have spaces available.

Contact us: For more information, please visit our website:

www.waterbeach-wasps.org.uk. For enquires please email us wasps.waterbeach@outlook.com or telephone us on 01223 861140 during opening hours. Outside of opening times, please leave a message and a member of the team will return your call when convenient.

Waterbeach Surgery

Waterbeach Surgery would like to assure all registered patients that the team is doing everything possible to keep the patients safe on attending the surgery during the coronavirus pandemic. Please don't delay getting the healthcare you need. That includes flu vaccinations, cervical screening and reviews for long-term conditions such as diabetes, COPD and asthma.

The surgery would like to confirm the appointment of a new experienced practice manager who will be joining the practice in December 2020. The new Advanced Nurse Practitioner, Estelle, has started working at the surgery along with Ade, the new practice nurse.

Dr. AlGhazzi is meeting monthly (by Zoom at the moment) with the Core PPG (Patient Participation Group), a group of 10 patients who ask questions and make suggestions on behalf of all patients. The role of the PPG is to be a critical friend of our Surgery. We also have a Virtual Group, who receive notes of our meetings and information sent to us from the CCG. If you would like to become a Virtual Member please contact the surgery initially. The surgery is setting up a dedicated email address for the PPG.

Before Covid-19 the PPG organised Information Meetings on topics such as Diabetes, COPD, Dementia, Mental Health and Age UK and we hope to continue these once we are through the pandemic.

Library News



Waterbeach Independent Library has continued to open its doors through the virus scenario, albeit after a very stringent Risk Assessment. The operations put into place have worked very well, and we would like to thank the Waterbeach Parish Council for their assistance with the costs of Covid proofing the Library, thus allowing our Library members to continue to enjoy the Library.

We have cut Saturday opening to once a month, and Wednesdays to every other week as we are operating with less Volunteers, as some are shielding themselves, or their families. However the Library is operational on Mondays, Wednesdays and Fridays, running on an appointment basis. All details are on the County Council website, and on the Library Facebook page.

We did close for one week of this latest lockdown to clarify various aspects, but took that time to deep clean and refurbish the Library, resulting in the drab old bookcases now being conducive to 2020 rather than the 1960s! Many thanks to the Volunteers who assisted with this project.

The Library also has new mobile childrens bookcases, and there will be further new bookcases for the Main Library area in the very near future. All of which lends to an updated Library for all.

We thank all our Library members for their support, and hope everyone stays safe until we can return to our normal lives in the near future.

We hope you all have a fantastic Christmas, and 2021 brings you all everything you wish for yourselves.

Happy New Year for 2021!

Waterbeach United Charities (Reg No 201528)

(Clause 4 (2) grant)

Organisations are invited to apply for a grant from the above Charity subject to funds being available at the end of the financial year.

Applications to be submitted in writing clearly stating the reasons for the grant and they should include details of any fund raising efforts that have been made. Closing date will be **31 December 2020**. These grants will be considered early in the New Year.

Not all applications may be successful and the Trustees' decision will be final.

Please send details to:

Mrs S Wilkin, The Secretary, Waterbeach United Charities
25 Payton Way, Waterbeach, Cambridge CB25 9NS

Waterbeach Station

More trains, longer trains

From Sunday 13th December most trains stopping at Waterbeach will be twice as long: 8 cars instead of 4, and the platform extensions we have watched being built over the past year and a bit will finally be in use.

It gets better: the Ely - King's Cross trains will also stop here, so (except on Sundays) there will be a roughly half-hourly service all day, a total of 40 southbound and 44 northbound each weekday: rather different from the four each way when the railway first opened in 1845.

In place of the most overcrowded train in the pre-covid timetable, the 07:22 which started from King's Lynn, there will be two: the 4-car 07:21 which starts from Ely (so Waterbeach is only the second stop) and the 8-car 07:26. The 07:21 will also call at Cambridge North.

It seems to have taken a long time for what appears to be a simple job, but there was more to do than simply building the platforms. The sensors that



detect when a train is in the platform, and when it leaves, had to be moved; and the large mirror at the end of the platform needed to be replaced by a CCTV system.

Unexpected problems can arise: you may have noticed that a part of the platform surface was replaced recently, which was because the old surface didn't give a good enough CCTV image under all

lighting conditions to check that it is safe for the train to leave with an 8-car train in the platform, though it was fine with a 4-car train.

We would have had the longer trains sooner if covid had not intervened; some of the work had to be re-planned to allow for social distancing, and the need to revise timetables during lockdown delayed planning for the new service.

There are some photographs of the platform extensions on the Fen Line Users Association website <https://www.flua.org.uk/> -- Fen Line Users Association represents travellers on the line between King's Lynn and Cambridge.

What's in a name?

Tillage Hall (and no, this isn't a misprint)

For many years Waterbeach Community Primary School provided a home for a lot of activities which would have taken place in a village hall in other villages. There were evening classes in the classrooms. The staffroom was used for meetings. The school was home to the Waterbeach Community Players (now Waterbeach Theatre Company) who have been putting on regular productions since the mid 1970's. There were sales and dances and wedding parties. There were large village meetings and performances by Waterbeach Brass and other events too numerous to mention. The library (then part of the County Library Service) shared the Community room with the Waterbeach Community Playgroup. This room was also used for brass band practices, the WI and Gardening Club, the Village Society, a mother and baby group and Parish Council meetings. There was a baby clinic in the hall once a month. There was in fact no need for a village hall as the school provided a home for just about everything.

Part of Roger Kilsby's role as Head of Waterbeach Community Primary School in the 1970's was to develop community activities and it was from then the Community Association was founded and both the Beach News and the Feast, as it is today, originated. (The original Feast tradition goes back many centuries but stopped with WW2 and did not restart until 1971).

Times change. Funding to enable the school to provide access to the community was reduced and safeguarding changes over the years made it much less easy to make the school available. The village began to grow. The Youth Club, which at one time had a temporary building on the school grounds next to the Scout hut, needed better premises. People began to feel that a village hall might be a good idea.

To cut a very long story short (covering about 10 years or more) and after many false starts, debates over where a village hall should go and a lack of funding, the idea to become a reality. Things fell into place around 2010 when a number of funding sources became available, these included the South Cambridgeshire County Council, Amey, Wren, a section 106 contribution from the Levitt Lane development to be used for services for children and young people, and some donations.

As a result a building was constructed with need to use money from the parish precept or borrowing by the Parish Council. It was open for business in 2012. WAY vacated the Old Pavilion which had been its 'temporary' home for far too many years and moved in to Tillage hall and the Parish Council were able to refurbish the Old Pavilion and at last have an office in the village.

As a condition of the S106 funding one third of the hall is for the sole use of the Waterbeach Action for Youth our youth club and is kept shuttered off except when they are running sessions. Users of the main space have included Slimming World, a number of fitness and dance classes, an accordion group, a mother

and
baby
support
group

and numerous parties. It has also been used as a polling station when the Salvation Army has not been available. Many hirers have commented on what a good place it is. It is a light, airy, warm and versatile space. The long wait was well worthwhile.

So why you may ask is it not called Waterbeach Village Hall? The Parish Council asked for suggestions for names for the hall and a good number of ideas came forward. One of which was Tillage Hall. The land near where the hall now stands used to be called the Old Tillage. It is close to Car Dyke a Roman waterway which runs from the Cam to Lincoln so would have seen Roman occupation. One meaning of the word the word Tillage is 'cultivated land' which is related to the verb 'to till', the preparation of the soil for cultivation of crops.

So another piece of Waterbeach history has been kept alive through its name. It is sometimes good to reflect on what life must have been like for the Romans and many later generations of Waterbeach people who worked the land where Tillage Hall now stands and how different it is today.

Tillage Hall remains in the ownership of the Parish Council but is leased to a Management committee whose members are all volunteers. The committee would like to recruit at least two new members to help ensure that the hall continues to be an important and appreciated village asset. Do you understand building maintenance, have ideas for promoting the hall, or other specific skills, or are you just interested in helping to make Tillage Hall as good an asset as possible? The day to day work is done by our brilliant hall manager. But she needs the support of the Management Committee. Being on the Management Committee isn't a very demanding role but it is an important one. If you think you might be interested e-mail Tillage Hall (enquiries.tillagehall@gmail.com) or phone 07803 502511. We'd love to hear from you.

Jane Williamson

Salvation Army



Sadly, due to the restrictions the corona virus has put on our lives, our groups and our Churches, we haven't been able to do all our usual fundraising events. It's been a time of hoping that having missed one event, then we'd be able to do the next. **THE MAMMOTH CHARITY SALE** - Many of you save up your unwanted articles of clothing, furniture, books, bric-a-brac, CDs, garden equipment, tools, toys, jewellery, practically anything, for which we thank you! One year we were given a ride-on mower on a trailer! Amazingly, earlier that day someone had said that they needed one, but thought it highly unlikely that we would have one – you just never know what might turn up! That was a very quick sale! Hopefully next year we can have a sale. Yes, we need to raise funds to maintain our Salvation Army, but also to put money into our community fund, so that we can help those in need. Also, during the 'sale' week we have opportunities to help people who come in. Having the tea room is a great asset for people to chat, not just socially but some really need someone to share their problems, their sorrows and their joys with. Miriam and her helpers do a great job there, also making sure that all the helpers are fed and watered! We have missed working with all our volunteers, who make it possible to do the sale, which as you know is a mammoth undertaking.

The Salvation Army is first and foremost our Church, but is used by community groups as well as our own Toddlers, indoor bowls, Home League. Our Band and our Choir (songsters) also hold practises during the week, so the chairs get moved a lot to make room for these. Our fundraising events are about bringing people together and having the opportunity to have tea and cake, we are blessed with lots of good cake makers, who all make different cakes, so there's a good variety! Monthly coffee mornings are being missed by many, also the cake stall at the Feast and refreshments at the Salvation Army, where many families meet up. The Community Association worked hard to recruit more helpers for the Feast, then sadly it wasn't allowed.

Being a person who loves vintage china, beautiful cake stands, linen, toys, clothes etc. I really missed doing the Vintage Tea Room in August. Many of you like to come to our Craft Fair in October and do some early Christmas shopping, where we are able to see the wonderful things that have been individually handmade – another big miss! Because we haven't been able to do these things, we have had time to remember and to appreciate and to hope that we'll be able to do them next year.

I am very thankful that we were able to have a service of remembrance at

the war memorial, outside the Church. It was a lovely sunny morning and very moving, perhaps more so because of restrictions on numbers of people. Joe our Bandmaster played the last post, the British Legion flag was there and I took our Salvation Army flag, Captain Carol laid the wreath, wreaths were also laid by or on behalf of other village organisations. It was a privilege to be there. It was sad that all the young people couldn't attend, brownies scouts etc. you were missed.

Thank you to those who have put their Christmas lights up early, they do cheer up the darkness and make us smile! I am hoping and praying that we will be able to attend our Churches this Christmas, our Salvation Army band will be able to play carols and families will be able to spend Christmas together. Thank you for your kind donations. Keep Safe and God bless you, your families and your friends.

Waterbeach Theatre Company

Unfortunately, along with everyone else in the country, WTC is suffering the effects of "Lockdown II".

WTC members are all desperate to get back on the stage to entertain you again but until the rules are relaxed we are waiting patiently in the wings.



We have our fingers crossed we will be back on stage soon but all planned productions have been moved to late 2021 and early 2022.

Meanwhile from all at WTC may we wish you as joyous a Christmas as possible. We are grateful for all your support and look forward to being allowed to entertain you once again in 2021.

Gardening Club

We, like other village organisations, continue to be frustrated by the restrictions to our activities and, with no prospect of an imminent return to normal conditions, are investigating other ways of keeping in contact and supporting each other. We have been invited to join in with Zoom talks arranged by the Hardy Plants Society and we are putting together our discounted order from the King's Seeds catalogue (one of the benefits of membership). The members' WhatsApp group has been a valuable source of advice and encouragement as well as exchanges and news of spare plants. This is not a time for anything to go to waste!



We have also continued to investigate the history of our predecessor clubs and societies in the village. See how many well-known village surnames you can find in this newspaper article from 1905:

24th Nov 1905 Cambridge Independent Press Presentation at Waterbeach

The committee of the Waterbeach Horticultural Society met in the Church Room last Friday evening, in order to present Mr. Wiles, their president, with a handsome silver inkstand and an address, which was worded as follows "Waterbeach and District Horticultural Society. To Harold H. Wiles. Esq., J.P. Dear Sir, —We, the undersigned members of Committee of the Waterbeach and District Horticultural Society, desire to express our great appreciation of the very generous manner in which you, as President, have rendered such valuable guidance and assistance in various ways during the past twenty years. In asking you to accept this silver inkstand as a slight recognition of our esteem, we also desire to give expression to the hope that your good health will long continue, and that you will live many years amongst us as our President." The signatories of the address were Messrs. H. Barton, F. Bull, A. Burling, C. Camps, U. Clayton, G. F. Coxall, J. F. Dodgson, C. Doggett, Dr. Edwards, M. L. Frohock, W. Frohock, J. Goddard, W. Hatley, D. Hildred, W. Ingle, F. H. Keats, A. Lambert, M. Mason. H. Parker, H. Sanders, W. Scott, H. Waddelow, Rev. T. Warrington, J. C. Warrington, and S. Wyatt. The Rev. T. Warrington, on behalf of the Committee, made the presentation, and Mr. Wiles suitably replied, causing much amusement by a humorous account of the vicissitudes through which the Society has passed.

The Landbeach Society

Due to the current situation there are no meetings of the Society planned until further notice.

Waterbeach Cycling Campaign

Last time we wrote about bicycle parking in the village and gave you an update on our hopes for more cycle paths around the village. All that's continuing and we can give you an update.

We hope that by the early Spring we will have the new bicycle parking spaces available – and that we can enjoy some special events to mark the occasion. One event we have been considering is a mass bicycle repair, so that if you have a bike but it needs some work, you'll be able to bring it along and we'll try to get it working for you. Please look out for announcements. More news on places to park ... we understand that St John's Church is looking into providing bicycle parking for both Church and Churchroom.

For many in the village, cycling is a great way to get out and exercise - often as a family. It's a social activity. The new Highway Code has just been out for consultation and colleagues in the Cambridge Cycling Campaign have campaigned with our support for the new version to allow side-by-side cycling. Our view is that people often ride together and not necessarily to get places. We believe that they deserve the protection of the Highway Code too.

If you'd like to go north or east from Waterbeach on a bicycle, it's difficult. There are no cycle paths or bridleways. In the last *Beach News* we mentioned the Causeway – a route that was said to run from the old Abbey (behind St John's Church) through what is now the village and to Denny Abbey and beyond. A branch of the Causeway went on the ancient settlement of Elmeney. (If you look south from behind the bookshop at Denny Abbey you can see the old roads and that branch which skirts around the eastern boundary of the Abbey before heading north. It's thought that the Causeway continued to Stretham, emerging more or less at the Old Engine. We would love to be able to cycle the whole way to Stretham on cycle paths and quiet roads, but we have quite some work to do yet.

Our short term goal is to find the evidence that would allow us to claim the route to Denny Abbey as an ancient right of way. Some readers will be familiar with the Bartholomew's Maps of the UK. Cyclists loved them because they had a big enough scale to be useful and small enough that you didn't have to keep stopping to turn to the new section of the map. The 1912 Bartholomew's Map of the area to the north of Cambridge clearly shows the route from the Village to Denny Abbey and that is almost certain proof that it was being used by cyclists for touring. Some eye-witness evidence that we have found from archives suggests it was a regularly used route for simply getting around the village. With twenty tenant farmers working on the old Winfold Farm in the 1930s, there was plenty of coming and going.

Going east from Waterbeach requires you to haul your bike over several stiles and across fields before you can join the National Cycle Route 11 that offers a

great ride to Ely via Wicken Fen. This is beautiful country and if only we could make the access a little easier, families on bikes could so easily enjoy a great day out. But this is a tough nut to crack. The local landowners oppose cycle access and we will have to simply continue campaigning and proving that there are plenty of us who would use these routes.

Please let us know if you would like to join the cycling campaign, or if you have comments or questions about cycling in and around Waterbeach. Please check the web site, www.waterbeachcc.com or email waterbeachcc@gmail.com.
Paul Bearpark, Richard Stobart, Tom Stroud

Farmland Museum



We hope you were able to visit us at the Farmland Museum and Denny Abbey and share in the fun of our shorter than usual season. We have now closed for the winter and we would like to express our thanks to everyone who has supported us in whatever way, at whatever time during this difficult year. We must say a special thanks to our band of volunteers, who have done so much to keep the museum running and to make it a fun place to visit, despite the restrictions in place and being unable to open all our displays. During the winter our volunteers will be busy as usual with repairs and maintenance, refreshing our displays and getting ready to welcome you back in 2021. If all goes to plan, we hope to open all of the museum at the start of the Easter Holidays in late-March.

Many of our volunteers are seen by our visitors throughout the summer but others are busy on 'hidden' jobs that are nonetheless vital to keep the museum going. Our gardening squad keep the allotment and the cottage garden blooming. The maintenance team look after the farming machinery – a long round of checking and oiling and painting and fixing. Everything in our collection is very carefully looked after. Even items not on display at the moment are documented and tracked by our collections volunteers so we know where everything is and its condition.

Would you like to join us? The Farmland Museum and Denny Abbey could not survive without the work done by volunteers and we are always looking for more to help out. Although the museum is closed, there is still plenty to do maintaining the site and the collection. When we open in 2021 we will be looking for volunteers to welcome our visitors and work in our gift shop, or help out in our café. If any of these roles appeal to you, do get in touch for a chat about how it all works. Email is best while we are closed to info@farmlandmuseum.org.uk. For more information on the Farmland Museum and Denny Abbey visit www.dennyfarmlandmuseum.org.uk

Toddler Playgroup



Well it's certainly been a busy term for us at Waterbeach Toddler Playgroup! We've had some new children join us over the course of the term, and they've settled in well and are enjoying their time with us. This term we've been busy looking at signs of autumn, looking at the colours of the season, leaf rubbing, leaf printing. They've also enjoyed exploring pumpkins, using hammers to bang golf tees in and then hooking loom bands around the tees. We used tweezers to try and get various things out of a giant spiders web. The children also enjoyed looking at the festival of Diwali, listening to the story of Rama and Sita, making symmetrical rangoli mats and painting and decorating elephants. We're now starting to prepare for the Christmas festivities.



We also have some exciting news regarding our move to our new premises! The staff team and committee have been busily working away in readiness to open. There's been a lot of hard work put in by everyone involved and we're looking forward to when we can finally move in. At the time of writing, we're hoping that we'll get the registration process completed with Ofsted and

be able to open in the Spring term from the new building. We would like to thank everyone at Cambridgeshire County Council and Urban & Civic for all their help in making this happen.

Once we open as Herons' Preschool, we will continue to be open term time only, but we'll be extending our hours to 9am-3pm Monday-Friday. We are also planning on lowering our starting age from 2 ½ to 2 year olds. We will be offering morning sessions (9.00am-12.00pm), afternoon sessions (12.00-3.00pm) and full days (9.00am-3.00pm). There will also be the option of adding a lunch hour to morning sessions (12.00-1.00pm). Although we'll be in a new building with a new name, we will be transferring everything that past and current families have loved about Waterbeach Toddler Playgroup with us! Look out for more updates on our Facebook page and posters around the village. We're all really excited for the next chapter and watching Herons' grow.

We're in the process of setting up a new website for Herons' Preschool, so in the meantime if you would like to find out any more information about what we offer, to register your child, or just registering your interest in Herons' Preschool, please contact Wayne Badcock (Playgroup Leader/Preschool Manager) on 07808357729 (during session times) or email waterbeachtoddlerplaygroup@outlook.com More information will be available on our current website soon too, www.waterbeachtoddlerplaygroup.org.uk

Please find below details of our December fundraisers :

Jingle Bell Run – run or walk 2km or 5km to raise money for Waterbeach Toddler Playgroup. To register, please email

waterbeachrunningfestival@gmail.com Closing date 20th December 2020

Advent Auction – one lot will be released every day between 1st and 24th December. For more information, contact wtpadventauction@gmail.com or look out for our posts on Waterbeach Babble Facebook page.

Arthur Rank Hospice



Arthur Rank Hospice Charity

Step a Million in the New Year!

Arthur Rank Hospice Charity is motivating you to start 2021 off on the right foot with their 'Step a Million' walking challenge. Encourage your friends, family and colleagues to get involved and keep each other going, as each of you pledge to walk 1 million steps in 100 days, starting on the 1 January. You



can even add a bit of healthy competition as you go head to head to see who can reach 1 million first!

You have until the 20 April to complete the challenge, which means accumulating an average of 10,000 steps each day. It a great way to start the new year: walking 10,000 steps a day can result in you feeling more energetic and awake, help look after your blood pressure and heart health, aid you

with sleeping better and reduce stress levels.

It could also be the perfect opportunity for you to discover more of the countryside around where you live, or re-visit some of the beauty spots and walking routes you may have stumbled across during lock-down. Even better your efforts and any sponsorship you raise will be helping to support Arthur Rank Hospice Charity's essential care.

The entry fee is £12 per person and includes support from a member of our fundraising team throughout the 100 days. Team discounts can be negotiated. Register at arhc.org.uk/stepamillion or contact Emma Bray on emma.bray@arhc.org.uk or 01223 675888.

Girlguiding



Back in November you probably spotted our Remembrance “recycled poppies” displays outside St.



John's Church and Barnfield Close - and maybe also noticed painted poppy rocks hidden around the village, or poppy pinwheels on

display in windows - that our Rainbows, Brownies and Guides created in lieu of being able to attend the parade and service.

As well as showing off their creativity and understanding of the importance of Remembrance, one unexpected extra skill our Rainbows, Brownies and Guides will have gained this year is how to be



experts on video calling. All our units have been meeting on Zoom during lockdown, plus we enjoyed a brief half term of face to face meetings whilst the guidelines allowed. It was a nice challenge to have to do everything outdoors, showing our adaptability and resilience of both Girlguiding volunteers and girls during 2020.

Girls take what they do in guiding with them as they grow up. Everything from working in a team, to taking the lead, to speaking out on issues they care about. It helps them develop the skills and confidence to become the young women they want to be and to make a difference to the world around them.

2nd Waterbeach Brownies have recycled over 20,000 crisp packets with their Terracycle scheme. Not only does it stop all those packets going into landfill, but it also fundraises a small amount for the Brownie unit too, so please keep collecting and drop off with Lisa at 8 Pieces Court.

Waterbeach Rainbows have been doing crafts, cooking, and games on

Zoom, thinking about how to welcome new Rainbows to their unit creating and creating lots of amazing artwork as they get to #KnowMyself – one of the six themes of the Girlguiding programme.

1st Waterbeach Brownie and Guide units, who are 61 and 62 years old respectively took part in the #ActYourAgeChallenge for Children in Need. Leaders from 1st Waterbeach Brownies chose to walk, run, cycle or ride for a total of 61 miles (to represent 61 years, the age of our Brownie unit) over a week. We totally smashed our total, racking up a total of 79.2 miles over the week, with our Young Leader Anna contributing a massive 16.5 miles in one day, as she did an epic 4 ½ hour hike around Waterbeach and surrounding villages – all in the pouring rain! Our Brownies also created and met their own challenges; with some doing 61 star jumps and others doing 8 minutes of exercise or baking 8 delicious looking flapjacks or brownies for an 8 year old Brownie!

All these adventures are made possible by the amazing commitment of our volunteers. If you or your daughter would like to get involved in Guiding, please register online at <https://www.girlguiding.org.uk/get-involved/>

Update from Lucy Frazer MP

As we look to the end of 2020, I wanted to take this opportunity to update you on some of the work I have been doing over the course of this year.

2020 has been a challenging year for all of us and I want to pay tribute to everyone who has helped and supported their local communities and vulnerable individuals during the pandemic. The response to the public health challenge of Coronavirus saw us pulling together, ensuring that our communities across Cambridgeshire kept connected. And I know that our villages are continuing their great support to others. I was pleased to safely meet with local volunteers in person across the constituency during the summer months – and to take part in regular Zoom updates with local leaders and stakeholders.

The Coronavirus pandemic brought an economic shock to the UK like we have not experienced before, but I am encouraged to see that we are taking steps towards a positive recovery. By the summer, in our area 14,700 furloughed workers were supported through the Job Retention Scheme and 4,600 self-employed individuals were given help through the Self-Employment Income Scheme. 1,687 local businesses received a cash grant of up to £25,000 thanks to the local authority discretionary grant fund. Whilst these measures have brought relief to both employers and employees, it is important that we continue to support local businesses as we look to the future.

Whilst the government is focused on dealing with the pandemic, other

projects are still progressing and I continue to work to improve our area. I welcome the announcement that the Department of Health has awarded Cambridge University hospitals £1.9 million to expedite the complete redevelopment of Addenbrooke's hospital, this will include a new children's hospital. And at the beginning of October, the Prime Minister also announced the building of a new cancer hospital. Residents across Cambridgeshire rely upon Addenbrooke's Hospital for their medical care, and population growth makes its complete replacement with a brand new hospital in the years ahead a necessity.

I have campaigned hard for continued investment in NHS services in our local area, and the construction of a new hospital has my complete support. This development is further evidence of the government's commitment to this scheme, and the NHS more generally. I will continue to do everything in my power to make sure that Cambridgeshire sustains its reputation for world-class medical services.

Furthermore for some I have been pressing for improvements to the A10 and spearheaded the campaign for its dualling. Some progress has been made on this project. There are eight options for the project, and the Mayor and Combined Authority held a virtual consultation during the summer to collect feedback from residents and road users. I have continued to press the Treasury on the importance of this work.

The Greenways scheme is one of the local efforts to improve cycleways by constructing routes between central Cambridge and nearby villages. The routes will help to reduce pressure on public transport and offer more environmentally friendly ways to commute and get around. I have supported this scheme since 2017, working with the Greater Cambridge Partnership and other local stakeholders to ensure that local residents were involved in determining the routes. I am really pleased that the routes to Fulbourn, Waterbeach and Linton have been approved. Having recently met with the GCP and written to the Board to press for further routes I am delighted that the three further routes in Horningsea, Bottisham and Saffhams have also been approved. I'm looking forward to using the routes and hope you will do the same!

In Waterbeach, I have engaged with stakeholders and residents regarding the Anglia Water treatment plant application. I have discussed with Anglian Water their plans, and I will continue to meet with representatives from the villages closest to the three potential sites as the process continues.

I continue to hold regular surgeries and am here to help with any issues you may have. Constituents who would like help with a problem or want to arrange a telephone call or a virtual meeting should contact me by emailing lucy.frazer.mp@parliament.uk or calling 020 7219 5082.

To keep up with my work follow me on Facebook and Twitter or visit my website – www.lucyfrazer.org.uk.

Best wishes for the rest of 2020 and I hope that 2021 will prove to be a better year for us all.

Lucy Frazer MP, South East Cambridgeshire

Military Heritage Museum



COVID 19 is still with and will be for a while so opening the museum cannot be guaranteed but we are hoping to on the first Sunday and the first Wednesday in March 2021, 10am to 4pm.

We did manage to open in October with booking times, having got all the COVID-19 protection in place for yours, our Volunteers and Trustees safety. It worked well and we can open again in 2021 with everything in place and working as it should.

For our newer residents who may not know where the museum is situated it is at the former Barracks off Denny End Road opposite the Brewery Tap Pub.

During 2020 there have been several visits by appointment outside normal opening time from people who either once were stationed at Waterbeach or a relative was. One chap pored over the photograph albums with his family remembering people and events during his service at Waterbeach. It is always heartening to know the Museum's resources are very much appreciated by our visitors.

With Christmas almost upon us we would like to remind everyone of the two books of 'At the Beach' - RAF times and 'Sappers at the Beach' which are both a great record of some of the events and operations which RAF and Engineers had a hand in from 1941 to 2013 here at Waterbeach. The books are £10 each and can either be obtained by post (see notices here) – or at Rosemary Newsagents here in the village. These are one of our main sources of income as we do not charge an entrance fee to the Museum. We thank our visitors for their donations which in another income stream.

I recently received an invitation from Amazon to register for Amazon Smile. So our ever proactive Treasurer has registered the Museum with Amazon on Amazon Smile for a charity account. Anyone who purchases a product from Amazon using the smile. amazon link, Amazon will donate 0.5% of the purchase price to the museum at no extra cost to the buyer. Any donations made will be paid directly into WMHM bank account quarterly by Amazon.

How to register: - Go to <https://smile.amazon.co.uk> select Waterbeach Military Heritage Museum as your preferred charity. It would be a good idea to bookmark this on your computer. This costs you nothing!! The prices are exactly the same as the normal website. If you are an Amazon user there is absolutely no reason not to do this. Please pass this on to your friends, family and neighbours, every little helps.

Wishing Chittering, Landbeach and Waterbeach residents a Peaceful and Happy Christmas and hope to see many of you in 2021.

Adrian Wright Chairman WMHM

WHAT (Waterbeach Homes for Amicable Transport)

Greater Cambridge Partnership Consultation - Waterbeach to Cambridge: Better Public Transport and Active Travel

Within the last few weeks the Greater Cambridge Partnership (GCP) arranged for a leaflet to be delivered across Waterbeach in relation to a consultation they are running titled “Waterbeach to Cambridge: Better Public Transport and Active Travel”.

Within the consultation the GCP describe what they are proposing as “a new dedicated off-road public transport and active travel route between Waterbeach and Cambridge”. However, if you look at the maps the routes actually all start at a relocated station serving the new town development, skirt around the village along the western perimeter, before heading down towards Cambridge. While the consultation document does not make mention of it, the 400 plus page briefing paper that was presented to the GCP makes reference to the possibility of compulsory purchase and demolition of people’s homes: this would most likely be at the pinch point through which three of the four proposed routes detailed in the consultation pass. This is around the junction of Glebe Road and Cambridge Road.

When we became aware of the proposal, a number of concerned residents from across the village came together and formed a residents group which we have named WHAT – Waterbeach Homes for Amicable Transport. WHAT has met with the GCP, made representation to Waterbeach Parish Council and has asked the GCP to hold a further public meeting within the consultation period; we will publish details on our website www.waterbeachwhat.co.uk as soon as they are available. Our website provides links to the GCP consultation and lays out our concerns with the proposal. These concerns include, but are not limited to:

- i) None of the routes included within the consultation actually pass through the village. It is therefore difficult to see how public transport is improved for us as residents. Indeed for some groups, running a bus service on the perimeter of the village will make it very hard to access;
- ii) Three of the four routes included in the consultation would pass through Green Belt land. Allotments would be destroyed, peoples homes would be affected by noise, vibration and pollution – some homes could be demolished;
- iii) The proposals take no account of any upgrade that may be approved for the A10. We contend that no decision to tarmac across Green Belt land should be made until plans for the A10 are understood, especially as they may mean that existing infrastructure could be used to deliver a sustainable public transport scheme.

During the consultation for the new development to the north of Waterbeach Cllr Robert Turner, the then South Cambridgeshire District Council's Cabinet Member for Planning commented that:

"..... we can say now that one of our key aims will be to ensure any development is respectful of the local area so that the village retains its identity, and the new settlement has its own."

It is difficult to see how building an off-road public transport and active travel route – something similar to the guided busway that runs between St. Ives and Cambridge – which runs through Green Belt land, destroys allotments, affects peoples properties (including the possible demolition of homes) can possibly be described as respectful of the local area or allow the village to retain its identity. The properties at risk are historic millers cottages dating back to the 1800s when Waterbeach was served by the steam mills. Once gone, this piece of our village history is irreplaceable. In addition, if this scheme is allowed to proceed it will open up infill opportunities across some of the last remaining green spaces we have in the village – we won't ever get them back.

If you are reading this before 14th December then we are asking you to engage with and respond to this consultation. This is our village and we need to have our say. The consultation closes at **midday on 14th December 2020**, it can be accessed via www.waterbeachwhat.co.uk or directly at www.greatercambridge.org.uk/W2C-Consultation.

If not and the consultation has closed, please do still access the information available. The GCP have said that as they narrow the search down to their preferred routes there will be subsequent consultations. Therefore, a review of the material now will be good background reading for the next stage of the process. You can also get involved via our Facebook page <https://www.facebook.com/groups/2351386958339652> or email us waterbeachwhat@gmail.com

Happy Folks Club

The Covid 19 pandemic has stopped all our activities since March. We did try to resume in September, however the second wave put a stop to that. We are now resigned to waiting for the vaccine to become available, then maybe we can get back to some semblance of normality. One sad note, we lost Horace Coxall a long serving member. He will be sorely missed by me and the club as he did an awful lot for us, god bless Horace. Although we cannot meet, I would like to wish all my members and their families Season's Greetings. To everyone who reads and produces the Beach News the same. I look forward to happier times when you can see the Happy Folks Club coach on its way to a day out!!

Tithe Barn Trust

500 years is a long time to wait to spend a penny! Fundraising campaign launched to install 'state-of-the-art' eco-loos at Landbeach medieval tithe barn.

Landbeach tithe barn is about to take the next step in becoming more user-friendly and accessible by installing eco-friendly, low maintenance toilets. £30,000 is what it will take to make the tithe barn fit for 21st century visitors.

To make this a reality, local group the Tithe Barn Trust is launching the 'Spend a Penny' campaign to raise the £30,000 needed to purchase and install two remarkable, eco-friendly toilets. The Kazubaloo doesn't require any water, electricity or chemicals. They are self-contained, easy to maintain and look good, which makes them ideal for the Barn and its future uses. The barn is around 500 years old and a penny spent in the year 1500 (when Henry VII was king) is the equivalent of over £5 today so we are asking our members, supporters and the community to donate a minimum of £5 each to enable the installation of these high quality environmentally-friendly loos.



Kazuboo in position - artist's impression



Landbeach Tithe Barn

Landbeach tithe barn has come a long way in the last 12 months - from a state of near collapse to a structure fit for use by the community for many years to come. By installing these toilets, we will be moving even closer to the goal of not just saving the barn but ensuring its future as a vibrant, popular, friendly space for all to enjoy.

Donations can be made on-line via our Total Giving page:
https://www.totalgiving.co.uk/appeal/TitheBarnTrust_spendapenny

For more campaign information go to:
<https://tithebarntrust.org.uk/2020/09/20/whats-next-for-the-tithe-barn/>
www.tithebarntrust.org.uk

Cambridge Without Incineration

Innovation NOT Incineration: Public Opinion Wins

– NO Amey Cespa Giant Cambridge Incinerator

After a nail biting 6 weeks back in summer, Amey Cespa did NOT challenge the Secretary of State decision to refuse planning for the giant Cambridge (Waterbeach) incinerator) to the High Court - the fight is over FINALLY!

CBWIN, Cambridge Without Incineration was delighted at the SOS decision issued on 15th June 2020, which upholds the decision of Cambridgeshire County Council and South Cambridgeshire District Council to reject the Amey-Cespa Incinerator at the Waterbeach Waste Park. We totally agreed with the inspector's reasons for refusal:

".....The appeal scheme was not in accordance with local plan policies in relation to protecting local character, built and natural heritage, and conflicted with landscape and historic environment policies and design policies covering renewable and low carbon."

Para. 36. Secretary of State Decision Letter

"The Secretary of State therefore concludes that the appeal should be dismissed, and planning permission refused."

Para. 43. Secretary of State Decision Letter

The victory is testament to the passion, hard-work and commitment of residents not only in Waterbeach, but from across the Fen Edge and Cambridge communities, who were united in their opposition to the incinerator.

Thousands signed a petition against the incinerator and raised thousands of pounds to pay for independent reports from one of the country's leading landscape and climate impact experts. The incinerator would have blighted the Fenland landscape for decades to come and caused irreparable harm to the ancient setting of Denny Abbey, a listed monument, which stands only 500m away from the Amey Cespa boundary.

Residents from Waterbeach and the surrounding area can breathe a sigh of relief, knowing that the incinerator will not go ahead. Declining air quality is a pressing issue and linked to climate damage and the rise of asthma and other respiratory and chronic diseases. Fine particulate matter, a by-product of incineration, is thought to bind to viruses, such as Covid-19, recent research indicates.

From the outset, CBWIN argued that the incinerator was the wrong solution to Cambridgeshire County Council's waste and in line with the emerging minerals and waste Local Plan, argued there was no need for the outdated facility. We fully understand the need to move away from landfill but incineration is classified as the worst option. Incineration is at the bottom of the energy from waste hierarchy and is a disincentive to recycling. The Waterbeach incinerator would have seen waste from >11 counties being

transported to the Waterbeach A10 site, requiring a continuous stream of rubbish as the site would be burning 24/7, every day of the year for 35+ years.

CBWIN would like to thank everyone who helped in this campaign including those who signed our petitions and gave so generously to our fund raising. A special thanks must go to the following whose support has been so important to us during our campaign - our local MP Lucy Frazer and Heidi Allen and Daniel Zeichner for their support of the campaign. Many local residents, parish councils, district councillors, Cambridge Friends of the Earth, MEP Lucy Nethsinga, and local labour and green party groups also supported the campaign and spoke out against the incinerator. Significant evidence was presented to the appeal against the incinerator by CPRE, Cambridge American Cemetery and Memorial, Historic England, Michelle Bolger Landscape Consultancy and Only Solutions (on behalf of CBWIN) and UKWIN. We would like to thank them all.

This is a WIN for local people, the county council, our unique landscape and heritage, the environment and wider climate protection, also a win for recommended and greener waste management solutions which now can come forward for Cambridgeshire, and most importantly a WIN for democracy and the younger generations that come after us and for whom this outcome has the greatest positive significance.

Full report from the planning inspectorate:

<https://www.gov.uk/government/publications/recovered-appeal-land-at-levitts-field-waterbeach-waste-management-park-ely-road-cambridgeshire-ref-3225123-15-june-2020>

CBWIN (Cambridge Without Incineration) <https://www.cbwin.co.uk>

CBWIN is a community group of residents and objects to the proposed incinerator at the Waterbeach Waste Management site.

Waterbeach United Charities (Reg No 201528)

Waterbeach United Charities provide financial support or pays for services that help to alleviate individuals who are "in need or distress" who are residents of Waterbeach Parish.

Electric Wheelchairs - We have a number of electric wheelchairs for those in need. If you would like to be considered please let us know.

Distress Grants -The Trustees would like to hear from individuals who may be *IN NEED OR DISTRESS*. If you think we could help, and to find out whether you are eligible for assistance, whether it be loaning equipment to you, or providing financial support, please contact:
All personal applications are confidential.

Mrs S Wilkin, The Secretary, Waterbeach United Charities
25 Payton Way, Waterbeach, Cambridge CB25 9NS

Waterbeach Barracks and Airfield

52.2656° N, 0.1291° E

The former barracks and airfield at Waterbeach offer a range of community facilities for local groups including:

- Sports Hall
- Studio area
- Tennis Courts
- Squash courts
- Community rooms

Military Heritage Museum

Open from 11am to 4pm on the first Wednesday and Sunday of each month, March to October, and by appointment with Adrian Wright (01223 861846).

Find out more

Urban&Civic hold regular events to keep you informed and give you the opportunity to shape the future development of this special place. If you or your local group would like to find out more, meet us for a coffee and have a tour of the site, contact Rebecca Britton on 07739 339 889 or email us: rbritton@urbanandcivic.com

Urban&Civic

waterbeachbarracks.co.uk





GIFT VOUCHERS

A PERFECT GIFT FOR FAMILY OR FRIENDS



TRAVEL BACK TO THE GOLDEN AGE
OF LUXURY RAIL TRAVEL AND
INDULGE IN AN AFTERNOON TEA

01954 233279 www.carriagesofcambridge.co.uk

Carriages of Cambridge, Capability Barns, Huntingdon Road, Fen Drayton, CB24 4SD [f](#) [i](#) [t](#)